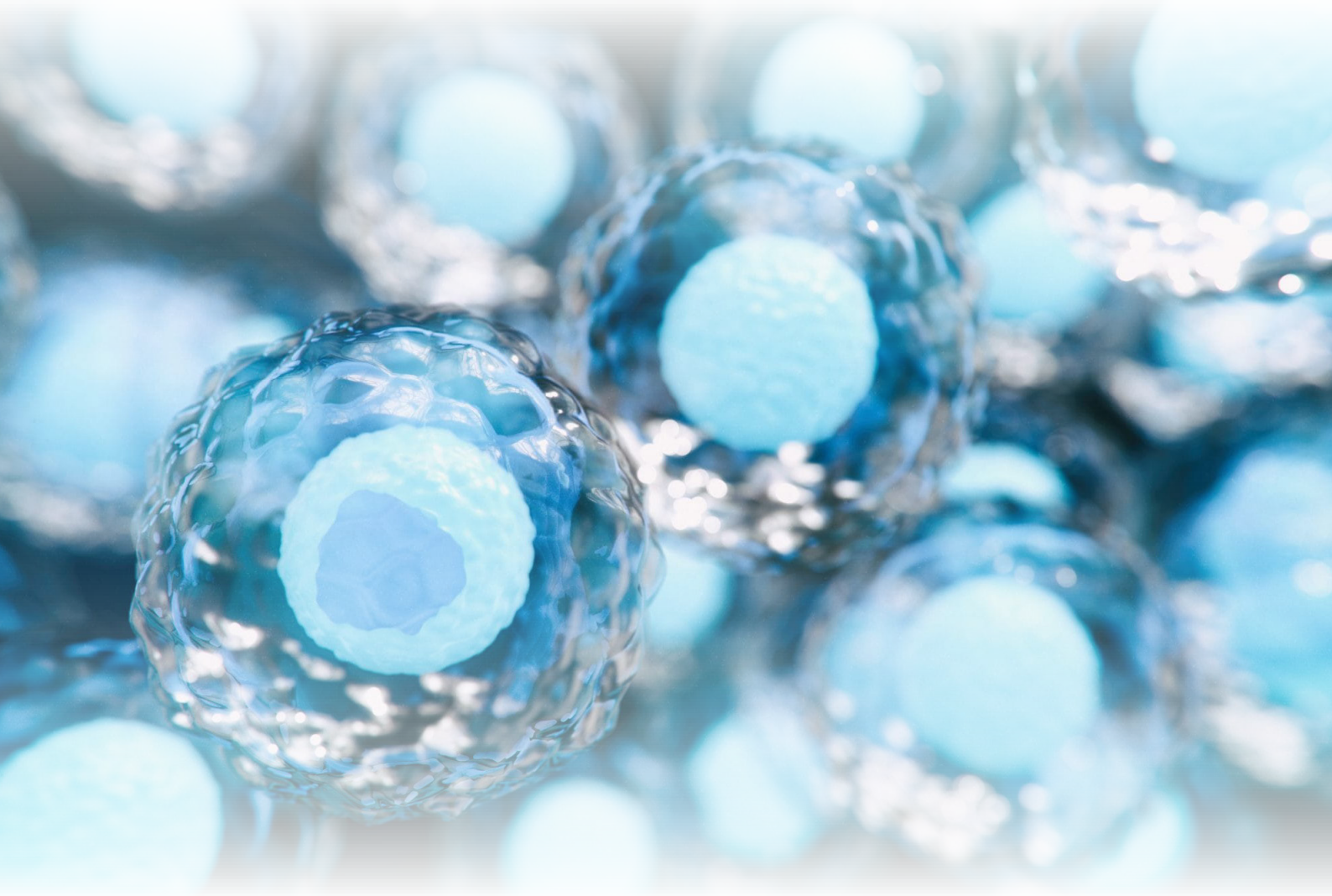


World Congress on

TISSUE ENGINEERING & REGENERATIVE MEDICINE

Jun 25 - 26, 2025 at Prague, Czech Republic (Hybrid Event)



Contact: Charles Darwin

Email: Charles_Darwin@eventflare.com Tel: +1-408-352-1010

Event website: <https://term-congress.org/>

We are delighted to welcome participants from all over the world to take part in the *World Congress on Tissue Engineering & Regenerative Medicine (TERM 2025)* to be held from **June 25-26, 2025** at **Prague, Czech Republic**

Theme: Redefining Health Care through Tissue Engineering and Regenerative Medicine.

This Hybrid event comprises of diverse program that includes keynote sessions, lectures, oral and poster presentations, scientific discussions and symposiums. These sessions are designed to reflect the latest advancements and challenges in the fields of Tissue Engineering and Regenerative Medicine. This conference provides a global platform to the researchers, surgeons, health care professionals, biotechnologists, biomedical engineers, Industry professionals and students to foster global connections by sharing and discussing the recent approaches in Tissue Engineering and Regenerative Medicine for disease remediation and tissue repair.

Regards,

Charles Darwin

Program Manager

Phone: 1-408-352-1010

Email: Charles_Darwin@eventflare.com

Website: <https://term-congress.org/>

Conference Highlights

Sessions at conferences may be tailored to suit attendees in various roles or with varying degrees of experience. The below listed main interesting topics can be covered throughout main conference sessions but not limited to.

- Advances in Stem Cell research
- Applications of Tissue Engineering and Regenerative Medicine
- Bio fabrication & 3 D-Bio printing in Organ Engineering
- Biobanking
- Biochips and Tissue Chips
- Biomaterials and Bioengineering
- Biomaterials in Regenerative Medicine
- Biomedical Engineering Techniques
- Bioreactors in Tissue Engineering
- Bone and Cartilage Tissue Engineering
- Cancer Stem Cells - Tissue Biomarkers
- Cell Therapy & Gene Therapy
- Immunotherapy
- Novel Approaches in Guided Tissue Regeneration
- Regeneration and Therapeutics
- Regenerative Medicine
- Regenerative Treatment Models
- Regulatory and Ethical Considerations
- Rejuvenation
- Scaffolds
- Stem Cell Engineering (SCE)
- Stem Cell Treatment for Diabetes
- Stem Cells-Tools to Battle Cancer
- Tissue Biomarkers
- Tissue Culture & Preservation
- Tissue Engineering
- Tissue Engineering and 3D Printing
- Tissue Implantation
- Tissue Regeneration
- Tissue Regeneration using Nanotechnology
- Tissues and Organs Regeneration and Therapeutics
- Transplantation
- Whole Organ Engineering and Approache

ABOUT PRAGUE, CZECH REPUBLIC

Prague, city, capital of the Czech Republic. Lying at the heart of Europe, it is one of the continent's finest cities and the major Czech economic and cultural centre. The city has a rich architectural heritage that reflects both the uncertain currents of history in Bohemia and an urban life extending back more than 1,000 years.

The physical attractions and landmarks of Prague are many. Among the finest is the Charles Bridge, which stands astride the Vltava River. The winding course of the Vltava, with its succession of bridges and changing vistas, contrasts with the ever-present backdrop of the great castle of Hradčany (Prague Castle), which dominates the left-bank region of the city from behind massive walls set high on a hill. The narrow streets and little taverns and restaurants of the older quarters contrast with the broad sweep of Wenceslas Square and modern parks and housing developments, while the great 18th-century Baroque palaces have their own elegance and splendour. Seen from the surrounding hills, the many church towers make up a unique perspective, giving Prague its description as the "city of a hundred spires."

More details, please contact us at:

<https://term-congress.org/>

Contact Us:

5201 Great America Pkwy #320, Santa Clara, CA 95054, United States

Email: Charles_Darwin@eventflare.com Ph: +1-408-352-1010

Venue Details:

Prague, Czech Republic

Website Links:

Abstract Submission: <https://term-congress.org/abstractsubmission>

Registration: <https://term-congress.org/registration>

